

A satellite is shown inside a test chamber, surrounded by blue acoustic foam. The satellite has gold thermal blankets and several large black antennas. The chamber walls are covered in blue, pyramid-shaped acoustic absorbers. The lighting is dramatic, with a bright yellow light source on the right side of the frame.

ROHDE & SCHWARZ

Miguel del Pie / Alejandro Bravo – Aerospace & Defence Test Spain

SATELLITE TEST INTRO



A RELIABLE TECHNOLOGY PARTNER

History

Established 1933 in Munich, Germany

Type of enterprise

Independent family-owned company

Global presence

In over 70 countries, more than 60 subsidiaries

Net revenue

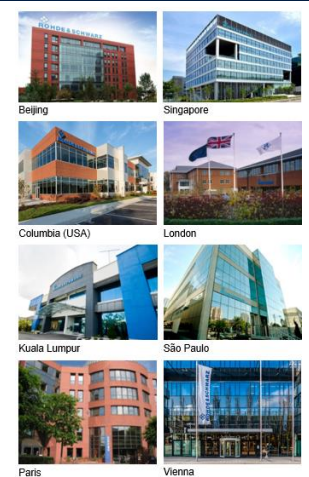
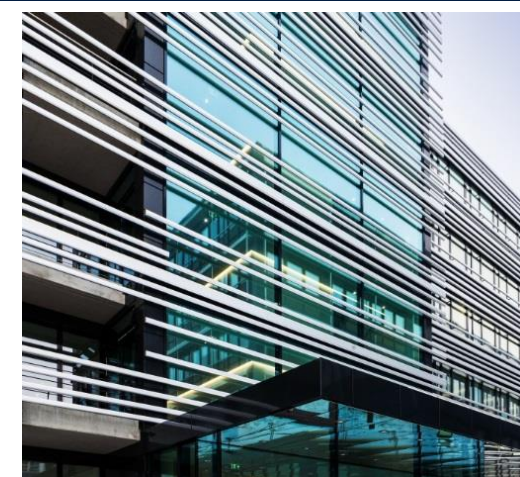
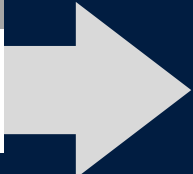
EUR 4 billion (FY 23/24)

Employees

>14000 worldwide

Success

A leading international supplier in all of its fields of business



ONE COMPANY, THREE DIVISIONS, DIVERSIFIED MARKETS

TEST & MEASUREMENT



Industry, Components & Research |
Wireless & Infrastructure | Automotive |
[Aerospace & Defense Testing](#)

TECHNOLOGY SYSTEMS



Mobile Network Testing | Secure
Communications | Critical Infrastructure |
Government | IP Network Analytics |
Broadcast, Amplifiers & Media

NETWORKS & CYBERSECURITY



Cloud Managed Business |
Network & Security Solutions |
Certified & High-Grade Crypto Solutions



3



3

ROHDE & SCHWARZ EN IBERIA

▶ **Historia**

Desde 1999, el enlace entre tecnología alemana y mercado local

▶ **Sedes**

▶ Lisboa, Madrid, Barcelona y Alicante

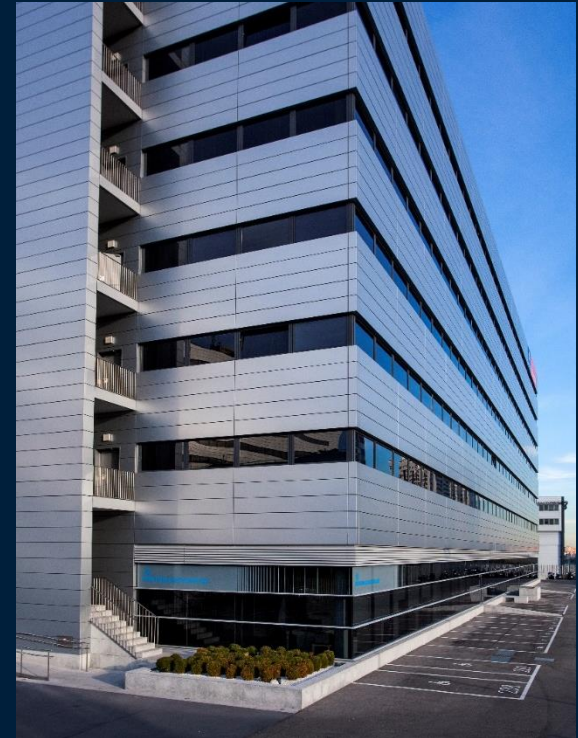
▶ **Servicio Local Integral**

Centro de Servicio local integral entre los mejor equipados y modernos del grupo R&S

- Ingeniería de proyectos
- Implementación personalizada de soluciones
- Asesoramiento y soporte pre y post venta altamente cualificado
- Laboratorios de calibración y mantenimiento

▶ **Empleados:** >100

▶ **Volumen de Ventas:** 40 M€



ENABLING RF TESTING IN AEROSPACE APPLICATIONS



Radar/EW Test

- Multifunctional radar system
- Drone detection radar
- Jammer
- Radar / EW component
- Scenario generation and receiver
- AESA & antenna



UAM Test

- ATC Communications
- ATM Air Traffic Management
- EMI/EMC
- Power and Signal Integrity
- Positioning & navigation and GNSS
- Radar



Avionics Test

- Avionics communications
- Flight connectivity
- Hybrid & Electric Aircraft
- Air Navigation
- Positioning & navigation
- GNSS

- Waveform Co-Design
- Waveform Verification
- Radio Qualification
- Component, Antenna and Battery
- High Speed Digital Design
- COMINT
- Communication Bus Protocols



MilCom Test

- Satellite Payload
- TRM and antenna
- Positioning & navigation and GNSS
- Ground station and ground terminal
- Satellite component
- Small satellite performance



Satellite Test

- Radiated Emissions
- Conducted Emissions
- Radiated Susceptibility
- Conducted Susceptibility
- MIL-STD461G



ADT EMC

TRENDS IN THE SATELLITE INDUSTRY

HTS / VHTS



MEGA-CONSTELLATIONS/ NEW SPACE



NON-TERRESTRIAL NWS IN TERRESTRIAL NWS



ADDRESSING FULL SAT ECO-CHAIN TESTING NEEDS

Project Life Cycle

Satellite Operators

Satellite Manufacturers

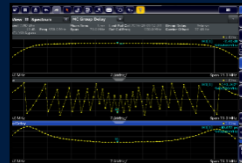
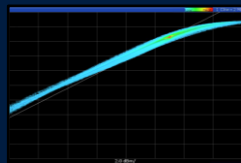
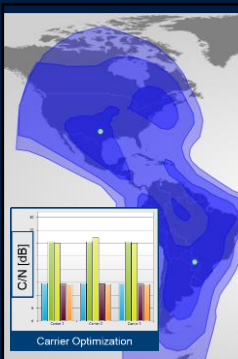
Launch

Satellite Operators

Satellite Design
NW Planning

Test Solutions for Payloads / Components /TRM/ Antennas

Ground Stations Satellite
Operation User Terminals



EMC, Communication

